

# **WICKHAM MARKET**

## **PARISH NEWS**

**IP13 0**



**YOUR FREE NEWS AND  
INFORMATION BOOKLET**  
From  
**Wickham Market Parish Council**

**October 2024**

## WICKHAM MARKET PARISH COUNCIL

Meets on the third Monday alternate months

Ivor French (Chair)

David Chenery (Vice Chair)

Robin Cooke

Gloria Creasey

John Day

Gemma Dempsey-Gray

Niki Fowler

Kelvin Gray

John Horsnell

Pauline Huggins

Dick Jenkinson



### Contact us:

Chair: Ivor French:

Clerk: Al Besly:

Deputy Clerk: Leanne Castle:

[ivor.f@wickhammarketpc.com](mailto:ivor.f@wickhammarketpc.com)

[clerk@wickhammarketpc.com](mailto:clerk@wickhammarketpc.com)

[deputyclerk@wickhammarketpc.com](mailto:deputyclerk@wickhammarketpc.com)

<https://wickhammarketpc.com/>

### For more information:



Social Media



Wickham Market Parish Council Suffolk



@WickhamMarketPC



Wickham Market Parish Council updates



wickhammarketparishsocials

## Parish Council Committees and Groups

**Finance & General Purpose Committee:** Meets on the first Monday alternate months. Responsible for grants and managing financial reporting and budgets.

**Planning Committee:** Meets as required and reviews and comments on all planning applications for the Parish.

**Staffing and Personnel Committee:** Meets as required and advises the council on all employment matters.

**Sizewell C Committee:** Advises the Council on the impact of Sizewell C.

**Environment & Leisure Working Group:** Meets on the second Monday alternate months and advises on the Cemetery, Allotments and Footpaths.

**Climate Change Working Group:** Responsible for the Climate Action Strategy and advising the Council on Climate Change actions.

**Village Hall Modernisation Working Group:** Working with the Village Hall Trustees to develop the hall.

**Emergency Plan Working Group:** Responsible for developing plans to manage emergencies in the parish.

Welcome to our October edition of **Wickham Market Parish News**. I hope you enjoy reading it and do let us have any feedback.

It is full of activities, showcasing just some of the many valuable volunteer groups we have in our community.

We have included some history of the area and some exciting developments for the community such as the George and the Village Hall.

If you have any questions or suggestions for the Parish Council, I host drop in sessions on Wednesdays from 12.30 - 2.30pm in the Parish Council office at the back of the Village Hall. Please come and see me if there is anything you would like to discuss.

**Ivor French**  
Chair, Wickham Market Parish Council  
[ivor.f@wickhammarketpc.com](mailto:ivor.f@wickhammarketpc.com)

### IN THIS ISSUE

- P4 Summer Market Report
- P6 Keep our Skate Park Open
- P7 Good Neighbours
- P8 Toddler and Baby Group
- P9 Rainbows and Brownies
- P10 Guides
- P11 Art Exhibition
- P12 Wildlife Corner
- P15 - 19 Local Business and Information pull-out
- P17 The Youth Shed
- P20 Wickham Market lost pubs
- P22 Community Transport - CATS and Katch
- P23 The George Community Pub
- P24 Wickham Market Primary School
- P26 Suffolk's Secret Army
- P28 Village Show Report
- P30 Village Hall Modernisation
- P31 Tour of Britain

## WICKHAM MARKET PARISH NEWS

Produced by

**WICKHAM MARKET PARISH COUNCIL**

Printed Locally by

**Suffolk Digital on FSC PAPER**

**DELIVERED FREE**

to all addresses whose postcode

begins **IP13 0**

Space  
for FSC  
Logo

### PRINT DEADLINES:

Content for the December issue by 15 November

### Delivery:

Over a two week period commencing on 16 December 2024

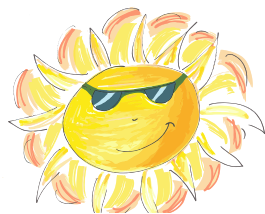
### Contact for contributions:

[clerk@wickhammarketpc.com](mailto:clerk@wickhammarketpc.com)

Please email your text with good quality pictures as separate attachments



# CELEBRATE SUMMER MARKET



First of all I would like to extend a huge thank you to all the residents on the hill! It was absolutely fantastic to arrive at 5:30 on Saturday morning and find the parking areas completely empty so we could set up the market immediately.



Also many thanks to the volunteers who got up early to help with the set up and organisation.

It was a nice warm summers morning and we had 34 stalls which were a mixture of charities and traders. It was great to welcome new traders and many regulars. There were crafts, cakes, clothes, sweets, soaps and stationery.



The Parish Council presented plans for the Village Hall modernisation and answered comments and questions on the proposals. Thank you for all your feedback, which is really helpful.

Many thanks to our Community Choir for providing some live entertainment. We look forward to seeing you again at Christmas!

It all went so well that we are going to do it all again before Christmas! Join us for our **Christmas Market on Saturday 30 November**. Pitches are a bargain at £10 for a 3m<sup>2</sup> space - bring your own gazebo!

Contact Leanne, our deputy Clerk for more details at [deputyclerk@wickhammarketpc.com](mailto:deputyclerk@wickhammarketpc.com)







**THIS  
SKATE PARK  
IS NOT  
SUPERVISED**

ALL INDIVIDUALS  
UNDERSTAND AND  
FULLY ACCEPT  
THAT THEY ARE  
USING THIS  
FACILITY AT THEIR  
OWN RISK



**Wickham Market Skate Park will have to be closed if vandalism continues.**

Skate Parks are recognised by insurance underwriters to be potentially dangerous places so they attach conditions to the insurance cover. These include correct manufacture and installation with regular checks but crucially they require signs detailing any information that is necessary for the safe use of the facility and clearly stating any restrictions on its use.

To comply with the signs requirement, the Parish Council screwed the first sign above, to an existing backboard at the skate park on Wednesday afternoon 14 August. By Thursday morning the sign had been ripped off and destroyed.

There is a second sign required to satisfy the insurance underwriters shown below. These signs are not restrictive, they simply promote safe usage for all to enjoy.

The Parish Council plans to source some more durable signs, but if these are vandalised, the skate park cannot be insured and WILL HAVE TO BE CLOSED.

## SAFETY INSTRUCTIONS

### SKATE PARK RULES

- SKATE AT YOUR OWN RISK
- HELMETS, PADS AND SAFETY GEAR STRONGLY RECOMMENDED
- PLEASE KEEP PARK CLEAN
- SKATEBOARDS AND ROLLERBLADES ONLY
- NO PROFANITY, DRUGS OR ALCOHOL

Whether it stays open for all to enjoy or has to be closed for insurance reasons is entirely up to you.

Please help keep this facility safe and available by preventing mindless vandalism.



**On a pleasant day in mid-September Good Neighbours held their annual Befriending Tea Party in the village hall.**

The 23 specially invited guests were elderly members of the Wickham Market community who live on their own, together with their befrienders; this was an opportunity for them to meet others, both old and new friends.

Transport was provided by our volunteers and the delicious afternoon tea, supplied in individual boxes by Peanut Parties of Pettistree, included finger sandwiches, scones and yummy cakes all washed down with copious cups of tea and coffee! A good time was had by all and the guests were sent on their way with whatever remained in their box.

Teresa Farley, the Good Neighbour Co-ordinator with Community Action Suffolk, and Sally Noble, WM District Councillor also attended as our guests and spent their time happily chatting with all the attendees. They noted that everyone they spoke to was happy to be a part of the Wickham Market community.

A big thank you must go to East Suffolk Council for their very generous donation of £250 from their Community Partnership Fund which enabled us to run this event so successfully.

The Good Neighbour Scheme supports Wickham Market Parish



residents by providing a service giving lifts or doing small tasks that enable those in need to cope. We also provide a befriending service within the village.

If you need our assistance, or would like to volunteer (we are always in need of more drivers) please call us on

07914 494108

The phone is manned Monday – Friday between 9.00am – 5.00pm, or you can leave a message.

# WICKHAM MARKET TODDLER AND BABY GROUP

**Bumps, babies and toddlers, along with their parent, childminder, carer or relative are welcome at the weekly (during term time) Wickham Market Toddler and Baby Group.**

(you don't need to live in the village, and you are very welcome to bring someone with you if you don't feel comfortable coming on your own). More than 25 little ones come along to the friendly and informal sessions which includes activities for little ones from zero to the rising 5's.



Steph, Hannah and Kathryn are the trio of volunteers who, with their wide range of expertise, qualifications and common sense arrange themed sessions for everyone to enjoy. First aid trained and Early Years Education qualified, Hannah and first aid trained Kathryn use their experience of creative and messy play for themed sessions such as transport, colours and seasonal. Steph has personal experience of special needs and all three women, when asked, provide informal advice (not diagnosis) on a range of toddler and baby related subjects such as faddy eating, potty training and sleep (or the lack of it)!

Steph said, "It's a chance to have a break from daily life, for themselves and the children to make friends, have some fun and explore messy play that they don't have to clean up afterwards. To

enjoy a hot coffee and some homemade cake while their little ones play in a safe environment helps in so many ways. I was a young mum myself and having the chance to ask questions and hear I wasn't the only one going through things really helped me not feel alone and isolated. In the process I made some great friends, who I still have today."

Hannah commented, "The sessions really help little ones learn to share and interact with each other and helps a child who had attachment issues begin the process of becoming 'school ready'."



The women understand that it's not easy being a parent, especially if parenting alone. Kathryn found herself

a lone parent with two little ones when she was suddenly widowed and said, "Wickham Market Toddler and Baby Group was a real lifeline for me and it's one of the reasons I continue to help run the group with Hannah and Steph."

The group meet from 9am until 11.30am at Wickham Market Village Hall on Wednesday's during term time. It costs just £2.50 per family, paid on the day and this includes coffee and cake for the adults and a suitable snack for little ones, the play equipment and crafts. The £2.50 gives parents and carers the use of the self-weigh scales. The funds pay for the hire of the hall and the annual, insurance: the group is self-funded.

Just come along on a Wednesday morning for a warm and friendly welcome from Steph, Hannah and Kathryn; ask to join their Facebook group page @ wickhammarkettoddlerandbabygroup



**In Wickham Market, Monday is the day when Rainbows and Brownies meet up.**

Girls aged 4 to 7 years are welcome to become part of Rainbows and take part in fun activities, games and work towards badges for learning new skills.

Brownies is great for girls from 7 to 10 years old, they get to explore their creative side, have fun cooking and enjoy being outdoors!

There is availability in both Rainbows and Brownies in Wickham Market so to find out more please contact Linda Payne via email at [linda.brownies@btinternet.com](mailto:linda.brownies@btinternet.com) or call 01728 604491



## WHAT A DIFFERENCE AN EVENING MAKES

Have you ever wondered how the many groups and clubs in Wickham Market for babies, children and teens are run?



Almost all are run by unpaid volunteers who want to make a positive difference in their community. One way of making that difference is helping the next generation to ensure they have fun, adventure and the space and confidence to discover their potential, whatever that might be.



For instance, Jacqui is the lead for Guides in Wickham which is for girls in the 10 to 14 age brackets. Jacqui said, "Girls take what we do in guiding with them as they grow up. Everything from working in a team, to taking the lead, to speaking out on issues they care about.



It helps them develop the skills to become the young women they want to be and to make a difference to the world around them. It is great to see them grow in confidence."

"I get a great deal of personal satisfaction helping put a fun and enjoyable programme together for our Guides who are a lively and intimate group. We would love others to help out, even for a set time period and keep in mind, if you know of a young person doing their Duke of Edinburgh's Award (DofE), volunteering is part of it, and we would be delighted if they chose Guides."



To find out more about volunteering or joining Wickham Market Guides (they meet on a Wednesday evening, term time) please contact Jacqui jacqui.r.goodwin@btinternet.com

## THOMAS CHURCHYARD SUFFOLK'S IMPRESSIONIST

Including Works by His Contemporaries

A special exhibition of paintings by Thomas Churchyard will be held at The East Anglian Traditional Art Centre in Wickham Market this winter.

Thomas trained as a lawyer, but the artist spent much of his time painting in Woodbridge and recording his trademark small views in Suffolk until his death in 1865. His best works in oil are inspired mini masterpieces and he is mentioned in the same breath as John Constable and John Crome.

The Exhibition will have a range of framed oil and watercolours for sale, predominately by Thomas Church plus other works from his contemporaries, including John Moore and the Smythe brothers, who worked in Ipswich. The pictures, priced from under £100 to several thousand pounds will be on show from Saturday 16th November until Saturday 30th November.

The Art Centre will be open from Tuesday through to Saturday, 11am until 3pm. For further information visit [www.eatac.co.uk](http://www.eatac.co.uk) or email [john@eatac.co.uk](mailto:john@eatac.co.uk) or call 01728 747050.





# WICKHAM MARKET'S WILDLIFE CORNER

## Four things we can do for nature as we move towards winter.

### 1. Please don't cut your hedge now.

If you look carefully at uncut hedges, they still have the occasional flower and certainly the most beautiful juicy berries. This is truly nature's larder. If you cut your hedge now, you'll be taking away so much food for the birds, invertebrates and mammals.

In my garden, I've had to cut back some blackberries, ivy and elder, but there's still plenty left to go round right through till February. Rotating when you cut would also help; cut one side one year, the other side the next, so there's something for the garden friends and the hedge can still be kept in shape. Also, some hedgerow flowers only grow on last year's growth, so if you cut every year, some of your hedges will never be able to flower or bear fruit. These flowers and fruits are both beautiful and such an easy way to invite nature back into your space.



If possible, please leave cutting back until all the fruit has gone, which will be February, before the birds start nesting. We are lucky to still have insects and other invertebrates munching on the leaves and fruit, which in turn, provide sustenance for other garden friends.

### 2. Please leave areas of long vegetation, grass and wildflowers.

These are so important for late emerging insects, including butterflies, providing really important nectar and habitat. If you are lucky enough to have longer vegetation with grasshoppers, it's great fun to see them 'pinging'



away in front of you when you walk, that disorganised wave of 'pinging' grasshoppers as you make your way through the long grass reminds me of my childhood. Your children will also think it's fun!

Imagine the small frogs, toads and newts, newly emerged from a wildlife pond; hunting in your long grassy areas for those mini beasts to eat and using the vegetation to hide away from their own predators. If this is all cut down, what will they eat and where will they hide? Did you know that when tiny newts leave the pond, they will stay on land for 2 years before returning to the pond to reproduce as adults?



Having this longer vegetation means cover for the larger amphibians too. On a warmer winter's day, you could have toads, frogs, newts and even grass snakes, all stalking their prey in that long vegetation. Let's not forget those beloved hedgehogs too, that snuffle around to sniff out those mini beasts in that long grass, or the bats that will swoop low, catching those flying insects as night falls.

So, let's leave some long grass and wild areas in our gardens over winter. You'll be amazed at all the wildlife that will be able to survive, even in a small grassy area left uncut on the edges of your garden. It's key to the survival of many invertebrates that you have invited into your garden during the summer months, so please don't abandon them now! Leave leaves too, so hedgehogs can use the leaves and grass to line their cosy winter nests with.

### 3. Create your own Wildlife Meadow.

This is the time of year that you can sow those seeds. Whether an acre or a square metre, it's not always about size! Pop those wildflower meadow seeds into the ground to start germination before the ground gets too hard and cold. From spring, it'll be providing sustenance for bats, butterflies, bees, moths, dragonflies and all sorts of invertebrates. These in turn will be prey for hedgehogs, badgers, foxes and birds, all on your doorstep.



#### 4. The forth and final note is to create a water source.

Any water source in your garden that is safe for wildlife is the best thing you can do to help nature survive. If you're not able to get out, dig your own hole and throw some pond liner down, or don't have the luxury of your own garden, you could still get creative and make a mini barrel pond, use a sink or even an old bath! As long as you've got boulders, logs, rocks, cobbles or bricks to make that imperative access for wildlife, regardless of the size of your body of water, you'll be saving lives.

Incredibly, dragonflies are still around in October! Maybe you'll see them skimming around like jewels amongst your long vegetation as they eye up your new wildlife pond, with a view to creating next year's dragonflies. Imagine if you created a wildlife pond this Autumn; by next year, you could have dragonflies mating around your pond! How wonderful would it feel to see dragonflies emerging from your own wildlife pond next year? If you create a body of water that's safe, no chemicals, with access in and out, nature will be able to drink, bathe, and carry on with her own life cycle, thanks to you providing a safe place.

Hoping you all enjoy your Autumn gardens. Why not take a stroll through the Pightle to see if you can find some grasshoppers there? I'd love to see some photographs of any autumnal wild visitors that you have in your gardens too, which we can then put in our next magazine. Please contact me on niki.f@wickhammarketpc.com to send any images or if you have any questions.



## LOOKING BACK



### Popular cycling modes to Pettistree church services c1972.

Green travel and walking!

This was before stride and ride and before Tour of Britain in Wickham area!

Bryan



## EMERGENCY NUMBERS

**FALLEN TREES:** 0345 606 6171

**HIGHWAY FLOODING:** SCC  
0345 606 6171 or 0300 1235000  
[www.highwaysreporting.suffolk.gov.uk](http://www.highwaysreporting.suffolk.gov.uk)

**STREET CLEANING/CLEARING:**  
0333 016 2000

**POWER CUTS:** Power Networks call:  
105 or 999

**DANGEROUS STRUCTURES:**  
01394 444 219 or 0800 440 2516

**MANHOLE PROBLEMS** that are considered an emergency:  
0345 606 6171

**WATER LEAKS:** Anglian Water: 24/7  
0345 145 145

**EAST SUFFOLK COUNCIL** Emergency out of Hours: 0800 440 2516

## BUSINESS DIRECTORY



### ALL IN AUTO SERVICES

Vehicle service and maintenance  
Riverside View Industrial estate  
01728 746999  
[allinautoservices@btconnect.com](mailto:allinautoservices@btconnect.com)

### BAYFIELDS DIGITAL

TV Aerials, Satellite TV, WiFi, CCTV  
9 Riverside View Industrial Estate  
01728 745745  
[www.bayfieldsdigital.com](http://www.bayfieldsdigital.com)

### BELLISSIMA BEAUTY

Beauty treatments/gifts  
46 High Street 01728 746981  
[www.bellissima-beauty.co.uk](http://www.bellissima-beauty.co.uk)

### THE BENGAL

Indian Restaurant/Takeaway  
70 High Street 01728 747767  
[www.the-bengal.co.uk](http://www.the-bengal.co.uk)

### BLUE CROCUS TEXTILES

Textiles, lampshades, curtains, blinds & fabric designs,  
179C High Street 01473 487844  
[www.bluecrocustextiles.com](http://www.bluecrocustextiles.com)

### CAFÉ 46

Cakes, coffee, lunch and more  
46 High Street 01728 746690  
[www.cafe46.co.uk](http://www.cafe46.co.uk)

### COOPERATIVE SUPERMARKET

14-18 High Street 01728 746313  
[www.coop.co.uk](http://www.coop.co.uk)

### EAST ANGLIAN TRADITIONAL ART CENTRE

48 High Street 01728 747050  
[www.eatac.co.uk](http://www.eatac.co.uk)

### ENGLISH GRAIN

Bespoke Kitchens and Furniture  
181 High Street 07850 416487  
<https://www.englishgrain.co.uk/>

### THE FLAMING FRYER

Fish & Chips  
75 High Street 01728 46361



### GELHAM HALL FLOWERS

Growers of seasonal flowers  
Gelham Hall, Wickham Market  
07495 156955

### HAIR AFFAIR

Hairdressers  
73 High Street 01728 746616

### IN-HOMECARE SUFFOLK

Community and Live in care  
34 High Street 01728 746416  
[sue.rose@in-homecare.co.uk](mailto:sue.rose@in-homecare.co.uk)

### PETER HALL FLOORING

77b High Street  
[www.peterhallflooring.com](http://www.peterhallflooring.com)

### K C AUTO SERVICES

MOT and vehicle maintenance  
Riverside View Industrial estate  
01728 747279 / 07747 831535

### LILY CHRISTINA

Bridal Collection (by appt only)  
77B High Street 07717 448509  
[www.lilychristinabridal.com](http://www.lilychristinabridal.com)

### JIM MALTBY

Wills, Lasting Powers of Attorney, Probate  
11 Observers Road 07765 253756  
[jimemaltby@hotmail.com](mailto:jimemaltby@hotmail.com)

### MORRISONS DAILY

Convenience Store  
79A High Street 01728 747413  
[www.morrisons.com](http://www.morrisons.com)

### THE NEW PEACH BOWER

Chinese Restaurant/Takeaway  
56 High Street 01728 747901  
[www.thenewpeachbower.co.uk](http://www.thenewpeachbower.co.uk)

### NR RESTORATIONS

Property renovations, refurbishments.  
Nathan Reay 07432 241101  
[nrrestorations@icloud.com](mailto:nrrestorations@icloud.com)

### NULIFE FURNISHINGS

Curtains, blinds, soft furnishings, upholstery  
Riverside View Industrial estate  
01728 747745

### OFFSET FILMS

Film and Video Production  
179D High Street. 01473 598669  
[www.offsetfilms.co.uk](http://www.offsetfilms.co.uk)

### OLD SCHOOL ANTIQUES

Unit 1, Riverside View IP13 0TA  
01728 746700  
[www.theoldschoolantiques.co.uk](http://www.theoldschoolantiques.co.uk)

### THE ORCHARD CAMPSITE

Campsite plus fully equipped Safari Tent  
28 Spring Lane, 07818 034729  
[www.orchardcampsite.co.uk](http://www.orchardcampsite.co.uk)

### THE PARLOUR

Brows, lashes and nails  
179 High Street 07872 070522  
[theparlour179@icloud.com](mailto:theparlour179@icloud.com)

### R & S HARDWARE AND GARDEN

62 High Street 01728 747394

### E R & R T RACKHAM LTD

Solid fuel & animal feed merchants  
Deben Mills IP13 0RG  
01728 746207 [www.rackhamltd.co.uk](http://www.rackhamltd.co.uk)

### REBECCA'S REFLEXOLOGY AND WELLNESS

32 High Street. 07845 599256  
[www.rebeccasreflexology.co.uk](http://www.rebeccasreflexology.co.uk)

### E W REVETT & SON

Butchery/Fine food and wine  
81 High Street 01728 746263  
[www.revetts.co.uk](http://www.revetts.co.uk)

### RISE AND SHINE

Window cleaning, domestic & commercial  
Featherbroom Gardens  
07811 201039

### DA RUSE PLUMBING & HEATING

Plumbing, heating, tiling. Bathroom & kitchen installations.  
42 Barhams Way, IP13 0SR.  
07999250203 01728564132  
[www.daruseplumbingandheating.co.uk](http://www.daruseplumbingandheating.co.uk)

### ST ELIZABETH HOSPICE

Charity Shop 54 High Street  
[www.stelizabethhospice.org.uk](http://www.stelizabethhospice.org.uk)

### SAXON VETS

22 High Street 01728 747427  
[www.saxonvets.com](http://www.saxonvets.com)

### ANNA SHAND

Chiropodist / Podiatrist  
64 High Street 01728 745010

### SOUTH EAST ANTIQUES

Buy, Sell & Value Antiques & Jewellery  
Unit 7, Riverside View, IP13 0TA  
[www.southeastantiques.co.uk](http://www.southeastantiques.co.uk)

### SVRC DOG WASH

Riverside View industrial estate  
07921 586339

### TEA POT TEA ROOMS

Dine-in/Takeaway  
70A High Street 01728 748079

### VALLEY FARM EQUESTRIAN LEISURE

Horse Riding, Visitor Centre, Holiday Lodge, Camping  
<https://www.valleyfarm.co.uk/>

### WICKHAM MARKET DENTAL CLINIC

2 Crown House 01728 746222  
[www.wickhammarketdentist.co.uk](http://www.wickhammarketdentist.co.uk)

### WICKHAM MARKET PHARMACY

68 High Street 01728 746267

### WICKHAM MARKET POST OFFICE

and Stores  
36 High Street 01728 746201



The poster is for 'Youth Shed @ the beehive' and features a honeycomb background. The text is as follows:

- Top hexagon: Thursdays 7-9pm
- Left side (vertical): Games, 11-18, Food
- Center hexagon: FREE! Just come along
- Right side (vertical): Sign-up online
- Bottom center hexagon: 19th Sept 31st Oct
- Bottom right hexagon: 28th Nov 19th Dec
- Bottom right: A QR code with an arrow pointing to it from the 'Sign-up online' text.
- Right side (large text): Youth Shed @ the beehive
- Top right: All Saints WICKHAM MARKET logo
- Bottom: Crown Lane, Wickham Market, IP13 0SA

## USEFUL INFORMATION AND CONTACTS

### CITIZENS ADVICE EAST SUFFOLK:

14 Colonial House, Station Rd, Leiston  
IP16 4JD. Mon, Tue, Thur, Fri 10-2pm

### Wickham Market drop in service:

Resource Centre (next to the Library)  
Tuesday 1.30 - 3.30 pm.

[www.leistoncab.org](http://www.leistoncab.org)

[www.citizensadvice.org.uk](http://www.citizensadvice.org.uk)

01728 832193 or 0808 2787868 (Free)

### Disability Advice Service

(East Suffolk): 01394 387070

### Good Neighbour Scheme: (GNS)

Available to residents in Wickham  
Market parish only. Transport to  
medical and social appointments.  
Friendship and support with shopping,  
posting letters, filling forms, comput-  
ers, dog walking, DIY, 07914 494108.

### Wellbeing Tree Café at The Aspire

Centre. Relax, chat and make new  
friends over a hot drink and cake.  
Wednesdays 10.30 - 12.30.

### Men's Shed: Behind the Village Hall.

Social and creative centre.

Mondays 2 pm

[www.wmshed.org.uk](http://www.wmshed.org.uk) 01728 747782

### INTERESTS

#### Youth Football Club, Simon's Cross

Playing Field, IP13 0ST.

Steph: 07778 880735.

#### Football Club and Social Club, be-

hind the Village Hall. 01728 747731

[www.wickhammarketfc.co.uk](http://www.wickhammarketfc.co.uk)

#### Tennis Club, Simon's Cross Playing

Field: 01728 746736

#### Bowls Club (playing Field):

01728 746715

### Red Triangle Bowls Club:

01728 604491

### GLEVERING HALL IP13 0EU

#### Badminton Club at 7:30

Thursday: Ladies / senior school students

Monday: Men / senior school students

07860 402288

### VALLEY FARM

**Pony Club** <https://www.valleyfarm.co.uk/content/pony-club>

**Tots Pony Club** <https://www.valleyfarm.co.uk/content/riding-tiny-tots>

#### Young Equestrians Club

<https://www.valleyfarm.co.uk/content/young-equestrians>

### VILLAGE HALL

Lettings: Alison 07653 226760

[lettings.wmvillagehall@gmail.com](mailto:lettings.wmvillagehall@gmail.com)

**Also at the Village Hall**

#### Bingo

Tuesdays 6pm

Tina Clack 01728 746846

**Community Club:** social activities  
and support for those new to the area,  
Friday mornings 01728 747078

Val Mann: [val@penpal.me](mailto:val@penpal.me)

#### Gardening Club:

Monthly third Thursday 7:30 pm

[wmgardenclub27@gmail.com](mailto:wmgardenclub27@gmail.com)

#### Toddler and Baby Group

Wednesdays during school term

9:00 - 11:30 (£2.50 per family)

[stephanieworne@gmail.com](mailto:stephanieworne@gmail.com)

### WI

Second Thursday each month at 7.30

### ALL SAINTS CHURCH

Crown Lane, IP13 0SA

01728 748224

[warden@wickhammarketchurch.org](mailto:warden@wickhammarketchurch.org)

[www.wickhammarketchurch.org](http://www.wickhammarketchurch.org)

#### Open Pantry: Fresh food and household

goods shared with anyone in need.

Thursdays 9 - 11 am.

**Open Door:** coffee, tea, biscuits and  
friendship.

Fridays 10am to noon

**Bell Ringing:** Monday Evenings

from 7:30 - 9pm

### BEEHIVE BUILDING Crown Lane

**Rainbows** (age 4-7), **Brownies** (age

7-10), Linda Payne: 01728 604491

**Guides** (age 10+)

Jacquie Goodwin & Tracy Burch

### WICKHAM MARKET LIBRARY

Chapel Lane, IP13 0SD. Open

Tuesday to Friday: 9.30 - 5.30

Saturday: 10 - 12.30 then 1 - 4.30

[help@suffolklibraries.co.uk](mailto:help@suffolklibraries.co.uk)

01728 747216

#### Regular Events at the Library:

**Family History Guidance** By Ap-

pointment: Tuesdays 10am - 1pm

#### Morning Book Group:

1st Tuesday monthly 10am,

**Tots Rock:** - active songs and

rhymes for preschool children:

Thursdays 9.45am - 10.15am,

#### Sewing Group:

Thursdays 1.30pm - 4.30pm,

#### Lego Club:

Saturdays 10am - 12pm.

### ROYAL BRITISH LEGION CLUB

01728 746915

### WM PRIMARY SCHOOL and LITTLE AVOCETS NURSERY:

01728 746405

### RESOURCE CENTRE Chapel

Lane, IP13 0SD: 01728 747782

### Resource Centre Gardening Group

2nd Wednesday monthly at 10am.

Barbara Harrington: [sbharrington@outlook.com](mailto:sbharrington@outlook.com) or come along.

### ARCHIVE CENTRE:

Local history, archives and artefacts

Philip Tallent 01728 746058

## WHICH COUNCIL DOES WHAT?

### SUFFOLK COUNTY COUNCIL:

Highways, Recycling

<https://www.suffolk.gov.uk/> 0345 606  
6067

**Reporting any highways issue in-**  
**cluding:** potholes, street lights, drains,  
hedges, gritting, pavements <https://highwaysreporting.suffolk.gov.uk/>

### EAST SUFFOLK COUNCIL:

Waste collection, Pay car parks, Plan-  
ning <https://www.eastsuffolk.gov.uk/>  
0333 016 2000

**Sally Noble** [sally.noble@eastsuffolk.gov.uk](mailto:sally.noble@eastsuffolk.gov.uk)  
District Councillor for the Wickham  
Market Ward.

### WICKHAM MARKET PARISH COUNCIL:

Cemetery, Playing Fields, Chil-  
dren's Play Area, Allotments,  
Markets, Footpaths (with SCC).

[footpaths@wickhammarketpc.com](mailto:footpaths@wickhammarketpc.com)

<https://wickhammarketpc.com/>

[clerk@wickhammarketpc.com](mailto:clerk@wickhammarketpc.com)





# WICKHAM MARKET'S LOST PUBS

**During a recent conversation, I realised that many of the residents of the Wickham Market area will not be aware of the number of pubs, inns and hostelries that used to exist in the village.**

So I thought it was time to reproduce a few extracts from our archives, over the next few months, leading up to the re-opening of The George. When you go into the Post Office, you are entering what used to be The Vine. If you have to go into the dentist's, you are going into The Crown.

At the height of its prosperity as a trading centre on a main coaching route, with flourishing industry and markets and fairs still functioning, Wickham Market had at least nine inns. Each had its own clientele: it was natural that those coming into market from surrounding villages found a place of refreshment after the journey or before starting back. Some relied heavily on the horse drawn coaching trade, and continued to do so after the coaches developed motor engines. Some were the meeting places for village activities. In the Second World War, troops from surrounding camps concentrated on the first pub seen on the walk in from Glevering, Rendlesham, Parham or a number of searchlight and anti-aircraft posts.

In later articles we will cover The White Hart, The Blue Boar, The Chaise and Pair, The Volunteer, The Chequers and The Temperance Hotel and we hope that by that time The George will have reopened. We have only one picture of The Vine as a pub. As you can see, entry was from the High Street. More recently, windows and doors have been put in on the side wall, where we now go into the Post Office.

The pub was originally named The Grapes, and records show the following:

1846 - Lewis Garrett, proprietor, The Grapes Inn.

1855 - William Jackson - The Vine.

1888 - Harry John Fennall, proprietor.

1912 - Charles Lines, manager.

1937 - 1942 Mr. Bowles.

At one time The Vine had a skittle alley which was very popular with the local lads. The Vine was closed around 1970. We have been told that the pub used to be known as "Dirty Dicks" because it was so unclean. Apparently, the landlady was partial to a drop of whisky, so the landlord had to keep the bottle on a high shelf, out of her reach. However, when his back was turned, she would get the customers to get it down for her.



The Crown is beside the Church, immediately south-east of the Market Hill. This was one of the first inns to be built, though it is equally possible from the fineness of its timber frame that it started life as a guildhall. The village stocks stood near it, and Symonds Market Cross stood on the north side of the churchyard behind the Crown, until its destruction by William Dowsing in 1644.



Historical references to it include:

1640 - "Henry Warner for his Inne and Symonds Cross.

1652 - "One night's quarter for nine soldiers at 4d a man at the Crowne".

1730 - "Buried a travelling man from the Crowne Inn whose name we could not learn".

1844 - James Woods, proprietor, the Crown.

1855 - Jeremiah Woods, who 'ran the inn in an exemplary manner'.

Other references tell us that among its services were a daily public reading of the newspaper; a Nine Pin Bowling Alley, and that the regulars had a 'Penny a Week Fund' for an Annual Dinner, in the nineteenth century.

Later owners were: 1888 - Robert William Wilkinson; 1912 - George Harris (who named his sons after 1914-18 War notables - Foch, Petain, etc); 1920's - Stanley Calver.

It was closed as an inn by 1950; since then it has housed an antiques business, a carpet and china shop, a hairdresser's and is now the dentist's surgery.

## Looking ahead

We are very pleased to have been given 3 old cine films, showing Carnivals and the Bypass Opening in 1976-77. We have had them converted so that we can show them in the Village Hall next year and we are working on a commentary to go with them.

**An appeal** – do you know anyone who has the skills in video editing to be able to put together the sound with the pictures? Please get in touch with us: email [chairman.wmarchives@gmail.com](mailto:chairman.wmarchives@gmail.com) or call in any Tuesday or Thursday morning, from 10:30 to 12:30, behind the Library in Chapel Lane.

We have never had a full photographic survey of Wickham Market, but over the course of the next few months, we are aiming to correct that, by taking pictures of every property (or group of properties) in the village.

The people taking the pictures will be wearing Archive Centre lanyards and carrying identification cards. You can be assured that the pictures will only be used for the purpose of enhancing our archives.

**Philip Tallent, Chairman, Wickham Market Area Archive Centre**



**COASTAL ACCESSIBLE TRANSPORT SERVICES**  
**CATS**



*Do you find it difficult to get to the doctors, hospital, work, a train station or meet up with friends? No access to public transport or a car to get there?*



#### Community Car Service

Travel with one of our friendly volunteer drivers in their own car. They will wait for you for up to an hour at your doctor's appointment, or to do some shopping for example, or for 2 hours for a hospital appointment.  
Cost: 45p per mile; pick up from your home, door to door.

#### Wheels Within Wheels

Our larger MPVs (Multiple Person Vehicles) are all wheelchair accessible. Ideal for taking you to hospital, or when you need a helping hand into the vehicle. Cost: 45p per mile, pick up from your home, door to door.



All our minibuses are also wheelchair accessible.

Our minibuses are available for hire to community groups.



*We are looking for more volunteer drivers! If you enjoy driving and have some spare time, please contact us.*

**Katch**  
www.katchlift.com

**Katch**  
BOOK NOW



○ Framlingham  
○ Parham  
○ Hacheston  
○ Wickham Market  
○ Wickham Market Station (for Cambridge Road)  
○ Tunstall  
○ Snape Maltings  
○ Snape

#### Katch is a Bookable Bus Service Along Fixed Stops

Monday - Friday: 7.30am - 6.30pm  
Saturday: 10.00am - 6pm Bank Holidays: 10am - 6pm

- Loyalty card scheme: book 6 journeys, and your 7th is free.
- 16 - 19 years: apply for a FREE cashless Endeavour card and get at least 25% discount on fares. Apply at [www.endeavourcard.co.uk](http://www.endeavourcard.co.uk)
- Book from as early as two weeks in advance, to as little as an hour beforehand.

Book on 01728 635 939

**connecting communities**

#### Connecting Communities

CATS runs pre booked bus services on behalf of Suffolk County Council, for villages that do not have a regular bus service.

- Monday – Saturday (including many Bank Holidays)
- Book by phone 01728 635938 or online, up to 14 days in advance
- Available to anyone for work, study, appointments, shopping, socialising, connecting to a bus or train, etc

**Please contact us to see how we can help.**

**community.transport@cats-paws.co.uk 01728 830 516 www.cats-paws.co.uk**

## NEW FUNDING MEANS COMMUNITY PUB WILL BE MUCH MORE THAN A PUB!

The George Community Pub currently under renovation with help from the National Lottery Heritage Fund is delighted to announce that it has received two new grants of £28,500 from UKSPF - Rural Business & Community Hub Fund scheme and £4,500 from the Community Inclusion Fund Suffolk Community Foundation for the fit out of its activity room, designed specifically to benefit the health and well-being of the local community.



*Artist Impression - Purcell Architects*

The fully accessible and dedicated space, which is sited upstairs above the pub bar and restaurant, can now be equipped with the latest technology as well as movable equipment and furnishings that can be adapted to suit a range of activities, such as an art therapy group, music ensemble, mindfulness session or a film.

"This is fantastic news," said Christine Abraham, Community Engagement Officer, "as it means we can fulfil our mission to create an exciting space dedicated to improving the well-being of the local community and make The George much more than a pub. The equipment and furnishings which can now be purchased are the result of community and stakeholder consultation but it doesn't end here. There has been a lot of interest from local people and organisations interested in using the space and we hope the community will not only enjoy the activities and events on offer but will support them by volunteering and even run some themselves."

The 16th Century George Pub is community owned and its renovation is being funded by The Lottery Heritage Fund, other grant providers and 460 local shareholders. The renovation includes an activity room dedicated to events and the well-being of our community. Opening is scheduled for spring 2025



**Funded by**  
**UK Government**



**Department**  
**for Environment**  
**Food & Rural Affairs**





## WICKHAM MARKET PRIMARY SCHOOL

It was fantastic to welcome all pupils back to school in September and hear all that they had been up to over the summer break.

We have lots of exciting trips, visitors and experiences booked in over the course of the year and look forward to sharing these with you in future magazines.

Applications for children joining a Reception class in September 2025 are now open through Suffolk admissions ([www.suffolk.go.uk/admissions](http://www.suffolk.go.uk/admissions)). We warmly invite prospective parents and children to visit and take a tour of school at a time convenient to them.

*Jo Harris Head of School*

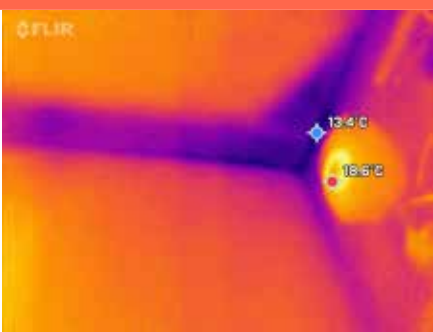


## THERMAL SURVEY

As summer comes to an end and the weather gets colder, it will soon be possible to use our thermal camera to look for heat loss from houses.

Surveys are possible when there is a temperature difference between inside and outside of 10C. This means that it may be possible to start surveys from the second half of October. From the inside the thermal camera can locate cold spots, indicating where more heat is being lost. The thermal image shows the corner of a ceiling that is colder than the rest of the ceiling and is losing heat. This could be because insulation at the edges of the roof is less than other areas. The thermal survey can indicate where to concentrate to reduce heat loss. The survey cannot say what exactly needs to be done.

To arrange for a survey text or leave a voicemail on 07935911416 or email [wmthermal@gmail.com](mailto:wmthermal@gmail.com). Somebody will get back to you to arrange a date.



## SCHOOL PLACES FOR SEPTEMBER 2025

Is your child due to start Reception in September 2025? We warmly invite prospective parents and children to visit and take a tour of our welcoming village school.

Come and see what makes our school a great place for your child to learn and grow. Tours can be arranged at a time that suits you.

To book a visit, please contact our school office at [wkt.admin@eastmat.org](mailto:wkt.admin@eastmat.org) or call 01728 746405.

## OUR SCHOOL OFFER

- A child-centred approach, putting your child's needs first.
- Regular Forest School sessions in our on-site woodland.
- An Ogden Trust school with a dedicated science lab for hands-on learning.
- Excellent enrichment opportunities including exciting trips and visiting speakers.
- Set on 7 acres with fantastic facilities including a library, gym, hall and stage.
- On-site breakfast and after school clubs available from 7:45am to 5:00pm.
- OFSTED rated Good (May 2023)
- Excellent Year 6 results in Summer 2024: 90% of pupils achieved the expected standard or above in reading and writing and 85% in maths - well above the national average.

Book a tour at [wkt.admin@eastmat.org](mailto:wkt.admin@eastmat.org) or call 01728 746405

We look forward to meeting you.



# SUFFOLKS SECRET ARMY

Hitlers Directive Number 16 from July 1940 stated that, "Since England, in spite of her hopeless military situation, shows no sign of being ready to come to an understanding, I have prepared a landing operation".



The events of May-June 1940 meant that Britain's position was indeed perilous. The remnants of the British Expeditionary Force had been evacuated from the beaches of Dunkirk and Hitler's Blitzkrieg tactics had been devastatingly effective across mainland Europe.

*"I am trying to piece together an Army in the most terrible crisis that has ever faced the British Empire".*

*General Ironside, Commander-in-Chief, Home Forces, 15th June 1940*

On 17th June 1940 General Head Quarters (GHQ) Auxiliary Units (Aux Units) was formed. Its role was twofold.

Firstly, sabotage by blowing up railway lines, aircraft, obstructing supply routes and generally creating havoc and mayhem behind the German lines. Secondly, espionage by collecting information on enemy troop movements and activities and relaying it back through the radio network to Army HQ.

There were three main groups targeted for the patrols. Firstly, there were those men too young to be called up, then those too old to be called up and, thirdly, the largest contingent, those in reserved occupations, for example farmers, gamekeepers and engineers.

Many of the earliest recruits were fit young men from the Home Guard. These men would be chosen for their knowledge of their local area and, of course, many of them would have learned how to handle firearms from an early age. Patrols usually comprised six or seven men, who were drawn from all walks of life and were chosen to merge into normal community life in between their clandestine Auxiliary activities. Each trained and operated individually so that they could not give each other away if they were captured.

Each patrol would operate from an underground Operational Base (OB) which was equipped with sufficient rations, ammunition and demolition equipment to last approximately 14 days.

The photo on the left is a replica of an Operational Base (OB) at the museum at Parham whereas, the photo on the right is a rare view of an OB showing the cramped conditions the Auxiliaries spent many hours in.

Their role was to lay low initially and then to emerge at night if the Germans invaded Britain. They aimed to cut off the supply lines and create havoc and confusion for enemy attackers.



Back Row: Albert Coble, Hector Wade, Alexander Darnett.

Middle Row: Sgt. Herman Kinsell, Capt. Scott Hinchey, Percy Kinsell.

Front Row: Stanley Crane, Arthur Whiting.

Each patrol would operate from an underground Operational Base (OB) which was equipped with sufficient rations, ammunition and demolition equipment to last approximately 14 days.

The British Resistance Museum at Parham has examples of the many early, often handmade, weapons used by Auxiliaries.

Once fully equipped, a typical Auxilier would be armed with a Sten gun, .38 pistol, a Fairbairn Commando Fighting knife and possibly a truncheon or some sort of knobkerrie.

They were issued with large quantities of incendiaries, explosives, 'time pencil' detonators and booby traps, often before the Regular Army.

From Southwold down to Ipswich, east of the A12 road 'Stop Line', one author who had researched 'Suffolk's Secret Army' estimated

that there was at least 14 Operational Bases, however, today any Auxiliaries who may have known where the OBs were are no longer with us, and without them, any chance of finding the precise location of an OB would be virtually impossible.

Additionally, when the Auxiliary Army was 'stood down' in 1944, the Operational Bases were vacated very often leaving quantities of firearms and explosives behind which, over time, can become quite unstable.....

With acknowledgement to the Parham Airfield Museum.

The museum is situated one mile Southwest of Great Glemham - post code IP13 9AF



Left: A rare view inside an Operational Base, showing the cramped conditions the Auxiliaries spent many hours in.

These OBs were always situated to the seaward side of the GHQ or inside Stop Line which extended from Edinburgh down the east coast, south of London to the far west of Wales in Pembrokeshire.

They were issued with large quantities of incendiaries, explosives, time pencils and booby traps, often before the Regular Army.

## Cramped Conditions Inside an Operational Base

Right: Replica of an OB at the BMO Museum

In the Museum are examples of the many early, often handmade, weapons the Auxiliaries used.

Once fully equipped, a typical Auxilier would be armed with a Sten, a .38 Pistol, a Fairbairn Syles Commando Fighting Knife and possibly a truncheon or some sort of knobkerrie.



**Roger Romney Brown.**





## What an amazing weekend we had at this year's Wickham Market Village Show on the weekend of the 4th and 5th of August 2024!

The committee would like to thank EVERYONE who helped us bring the show together. From all the helpers setting up in the hall, to the fantastic kitchen staff with Chef Phil, everyone who donated cakes, Primary School students and staff for the wonderful bee displays, everyone who helped and donated to the raffle and tombola, our show sponsors and Robin Hall for supplying a wonderful display of all things bee and to everyone who got stuck in to pack the show away until 2025.



The show looked fantastic as gardeners, creators and cooks battled the weather conditions to grow and make, and a create another hall full of wonderful creations. This year's show, saw a record number of entries especially from children of the village which was wonderful. The hall looked splendid festooned with vegetables, flowers, floral art, jams, cakes, photographs and handicraft items of all varieties.

We remembered three gentlemen of Wickham Market and extend a grateful thanks to the families of Don Berry, John Caley and Ted Barrett, for supporting the show through sponsorship of classes in their memory. It was lovely to hear such super stories of their enthu-



siasm for the show and all things gardening. The 2024 Show theme was Bees. A very necessary theme to highlight the plight of the very important bee in our modern world. The committee would like to thank Robin Hall for creating an informative display outside the hall to talk about bee keeping and share the wonderful products that come from bees. Robin sells his honey locally from Broad Road in Wickham Market in case you missed the chance to buy some at the show.

It is always exciting to see what entries come in and our judges were impressed with the class entries. Whether you 'won' or not you are already a winner in our eyes for getting involved. We thank our judges for taking the time to go through our exhibits and judging the winners. Never an easy task and one that we are as always most grateful of them being willing to take part in.

The Show is about celebrating the talent of Wickham Market and local villages and bringing individuals, school and community together. We also made a very healthy profit which will be passed to the Village Hall Committee/CIO to aid



the refurbishment of Wickham Market Village Hall.

A final mention is to Councillor Sally Noble who was kind enough to come and hand out the winner trophies on Sunday afternoon. The event truly was a celebration of the best of Wickham Market and beyond!

The 2025 show dates will be Saturday 2nd and Sunday 3rd August 2025. We hope to announce the show theme before Christmas.

**Alison Calvesbert-Rearden**

The show team; Anne, Rosemary, Jenny, Ali, Gloria, John and Philip. We are a friendly band of like-minded individuals, if you would like to get involved please make contact with either: Alison Calvesbert-Rearden [acalvesbert@gmail.com](mailto:acalvesbert@gmail.com) or Anne Westover [ennaoverwest@btinternet.com](mailto:ennaoverwest@btinternet.com)

### Key sponsors:

ER & RT Rackham  
Bayfield Electrical and Digital  
Robertsons Structural Engineers  
East Anglia Traditional Arts Centre  
Families of:  
Don Berry, John Caley, Ted Barrett

Potsford Farm  
Wild about Campsea  
Riverside Engineering  
All in Autos  
Artisan Construction EA Suffolk  
and many other village residents and local businesses (raffle gifts)

# VILLAGE HALL GETS SIGNIFICANT FINANCIAL SUPPORT

Plans to modernise Wickham Market village hall have been given a major boost by receiving £500,000 towards the £1.2m target.



The village hall, built in 1952 serves a wide area and hosts a variety of clubs and activities. But over time it's shown its age and needs investment to meet current regulations, carry out repairs and create a modern layout that will attract many more users.

A working group from the Parish Council and the village hall trustees has worked hard to provide recommendations on how the modernisation could be carried out. The Parish Council has engaged local architects to come up with a design that is fit-for-purpose and includes a variety of low energy systems.

The financial award comes from East Suffolk Councils Community Infrastructure Levy, which the developers of new housing have to contribute. With strong competition for these funds the award to Wickham Market is significant and will help the Working Group apply for other grants to meet its target.

Cllr John Horsnell, from Wickham Market parish council, who is leading this project, said "A modernised village hall is seen as a future hub, both for the village and many other neighbouring villages. The ESC funding means we are well on our way to creating a modern, sustainable and vibrant space for future generations to enjoy. Hopefully the grant will encourage other funders to support the scheme."

Cllr Sally Noble, Ward Member from East Suffolk Council added "ESC's award of this grant shows our commitment and belief in this project. The benefits of a modernised village and its future use can reach out to many of our residents near and far"

Cllr Kay Yule, East Suffolk Council cabinet member for Planning and Coastal Management, said: "This is what CIL funding is all about; taking the financial contributions of developers in areas of housing growth and putting it to good use – making a difference to the lives of local people. In this case, by improving an already well-used village asset requiring modernisation to meet the needs of users."

# TOUROFBITAIN

We were really lucky in Wickham Market to have the Tour of Britain Men 2024 visit our village on Sunday the 8th September.

You all did a fabulous job of coming out to support the extremely fast athletes as they powered up High Street, through the Market Square and continuing on Broad Road.



On Saturday the 7th September, with the help and funding from East Suffolk Council and East Suffolk Community Partnerships, we held an event at the craft market that happens on the 1st of month here in Wickham Market. We had live music, a bar and the lovely Alex from RE-CYCLE carrying out free health checks on bicycles. Alex was able to assess over 30 bikes in a 4 and a half hour period! That is a lot of work!

We hope that you enjoyed visiting us at the market and the entertainment that we organised for our community to share.

**BIKE TRAIL:** We were excited that we were able to take part in the East Suffolk Council Speedy Bike Trail! 10 businesses around Wickham Market were sporting large stickers in their window, indicating that they were taking part. People were able to collect story books and then a sticker from each business, this would complete the story book!

Thank you to everyone, businesses and participants, for enjoying this with us.





**Wickham Market  
Markets on The Hill**



**CHRISTMAS  
MARKET  
SATURDAY  
30<sup>th</sup> NOVEMBER  
9:00 - 2:00**



**[wickhammarketpc.com/markets](http://wickhammarketpc.com/markets)**